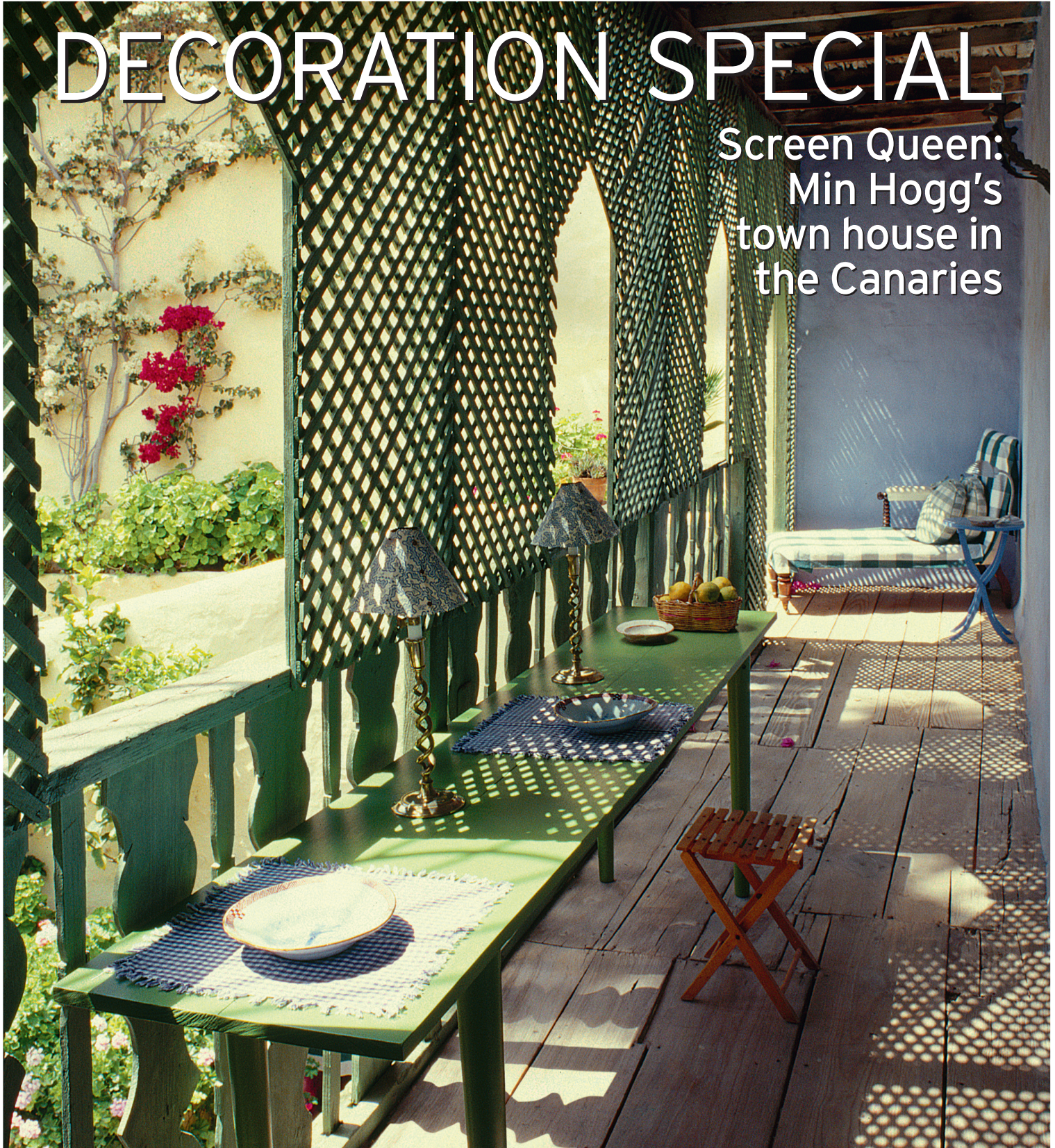


OCTOBER 2019

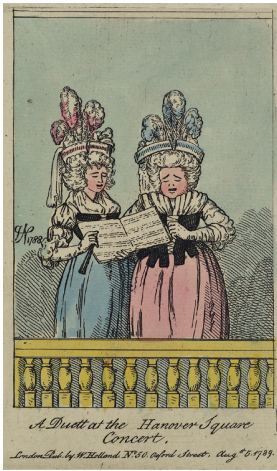
THE WORLD OF INTERIORS

DECORATION SPECIAL

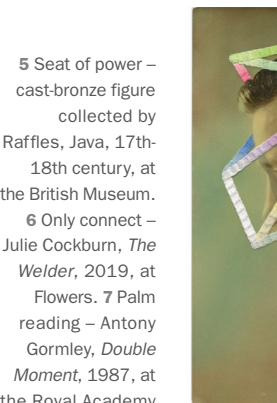
Screen Queen:
Min Hogg's
town house in
the Canaries



EXHIBITION diary



1 Brands hashed – Rayyane Tabet, *Three Logos*, 2013, at Parasol Unit. 2 Sweet harmony – John Nixon, *A Duett at the Hanover Square Concert*, 1789, at the Foundling Museum. 3 Nude descending – Luchita Hurtado, *Untitled*, 1969, at the Serpentine Sackler. 4 Sleeping beauties – Tobias and Sara on their Wedding Night, c1520, Cologne, Germany, at the V&A.



5 Seat of power – cast-bronze figure collected by Raffles, Java, 17th-18th century, at the British Museum. 6 Only connect – Julie Cockburn, *The Welder*, 2019, at Flowers. 7 Palm reading – Antony Gormley, *Double Moment*, 1987, at the Royal Academy

LONDON

BEAUX ARTS MADDOX ST, W1 19 Sept-19 Oct. *Mon-Fri 11-6*. As I was going to St Ives: but you needn't travel quite so far to see the cream of Cornish art; this gallery has mined private collections for abstract paintings and constructions by Frost, Heron, Lanyon and Scott.

BRITISH MUSEUM GREAT RUSSELL ST, WC1 12 Sept-12 Jan. *Mon-Thurs, Sat, Sun 10-5.30, Fri 10-8.30*. Sorrow, loss and social injustice in the masterful prints of Käthe Kollwitz (1867-1945). *Plus*, drawings by contemporary artists from 1970 to the present. 19 Sept-12 Jan, bronze figures, shadow puppets and painted masks collected in Java and Sumatra by Sir Stamford Raffles.

BROWSE & DARBY CORK ST, W1 11 Sept-3 Oct. *Mon-Fri 10-5.30*. Sophie Charalambous's glowing watercolours, reminiscent of Edward Burra's, incorporate observed, remembered and imagined imagery of the Cypriot landscape.

COOKE LATHAM GALLERY PARKGATE RD, SW11 6 Sept-1 Nov. *Wed-Fri 12-6*. 2D or not 2D: operating in 'the space between sculpture and painting', and influenced by Cubism, architecture and film, Catherine Story presents a show inspired by the overlooked friezes, reliefs and statues on façades and street corners.

DAVID GILL GALLERY KING ST, SW1 13 Sept-17 Oct. *Mon-Fri 10-6, Sat 11-6*. New work by Sebastian Brajkovic: contorted furni-sculpture that recalls the loops and twists of Chinese calligraphy, and huge Murano-glass chandeliers.

FLOWERS KINGSLAND RD, E2 12 Sept-2 Nov. *Tues-Sat 10-6*. The figures in 1940s studio portraits and other found photographs are veiled or obscured by Julie Cockburn's embroidered or painted embellishments; but, she says, she's actually 'unmasking' their hidden meanings.

FOUNDLING MUSEUM BRUNSWICK SQUARE, WC1 20 Sept-5 Jan. *Tues-Sat 10-5, Sun 11-5*. Making a spectacle of yourself: a guide to seeing and being seen at Georgian theatres and concerts, with fans, supper-box paintings, caricatures, set models, tickets and programmes.

INDAR PASRICHA FINE ARTS MORETON ST, SW1 18 Sept-19 Oct. *Tues-Fri 11-6, Sat 11-5*. Tobit Roche's (Wol June 2002) luminous Indian landscapes.

KARSTEN SCHUBERT PARK VILLAGE STUDIOS, NW1 28 Sept-6 Oct. *Mon-Sun 11-6*. The story of British sculpture since the 1960s emerges in pieces by Caro, Turnbull, Whiteread and others, selected by Schubert before he died this summer. Presented in a former Victorian riding school, the show also serves to celebrate the dealer's erudition and commitment to his artists.

MAYOR GALLERY CORK ST, W1 10 Sept-1 Nov. *Mon-Fri 10-5.30*. Clear cut: Carlos Cairoli's acrylic-glass Constructivist sculptures and reliefs.



MUSEUM OF LONDON DOCKLANDS WEST INDIA QUAY, E14 *Until 27 Oct. Mon-Sun 10-6*. Source material: stories of London's forgotten rivers.

ORLEANS HOUSE GALLERY RIVERSIDE, TW1 *Until 25 Oct. Tues-Sun 10-5*. 'A grotto is not often the wish or pleasure of an Englishman, who has more frequent need to solicit rather than exclude the sun,' scoffed Dr Johnson when Alexander Pope constructed one such cavern in his Twickenham garden. But as architects Wignall & Moore explore here, Pope's shell- and crystal-studded creation, which served as study, retreat and camera obscura, had a profound influence on the poet's work.

PARASOL UNIT WHARF RD, N1 29 Sept-14 Dec. *Tues-Sat 10-6, Sun 12-5*. Rayyane Tabet's quietly rigorous sculptural installations speak volumes about the economic and political forces that shape our lives. Witness the elegant arrangement of marble columns from a demolished Beirut house and stress-test concrete cylinders from the skyscraper that replaced it.

ROYAL ACADEMY OF ARTS PICCADILLY, W1 *Until 29 Sept. Mon-Thurs, Sat, Sun 10-6, Fri 10-10*. Bourgeois interior scenes come over all creepy in the paintings of Swiss artist Félix Vallotton. *Until 27 Oct*, Helene Schjerfbeck's radical late self-portraits: 'this way the model is always available,' she wrote, 'although it isn't always pleasant to see oneself'. 21 Sept-3 Dec, body of work: Antony Gormley's abiding interest in the human form – claustrophobically contained, containing, or cast; floating in space; as spectator or collaborator.

SERPENTINE SACKLER GALLERY WEST CARRIAGE DRIVE, W2 *Until 20 Oct. Tues-Sun 10-6*. Vertiginous views of surreal landscapes and bodies in the paintings of 98-year-old Luchita Hurtado.

STEPHEN FRIEDMAN GALLERY OLD BURLINGTON ST, W1 27 Sept-2 Nov. *Tues-Fri 10-6, Sat 11-5*. In bright blue hues, Lisa Brice plays with the poses and props of historical figure painting. Female 'subjects' might be shown stripped, smoking, reclining; but they're also active agents, painting the very pictures they occupy. *Plus*, Jonathan Baldock's mask-like ceramics.

V&A CROMWELL RD, SW7 *Until 20 Oct. Mon-Thurs, Sat, Sun 10-5.45, Fri 10-10*. Hands-on show digging into the future of food production. 5 Sept-10 May, the white stuff: historic Blanc de Chine is set alongside contemporary Dehua porcelain. 21 Sept-8 March, Tim Walker's new photographs made in response to objects from the V&A collections – stained glass, Beardsley illustrations, Edith Sitwell's wardrobe – in a survey staged by his long-time collaborator Shona Heath (think floating props, fake fireplaces and lashings of green velvet).

